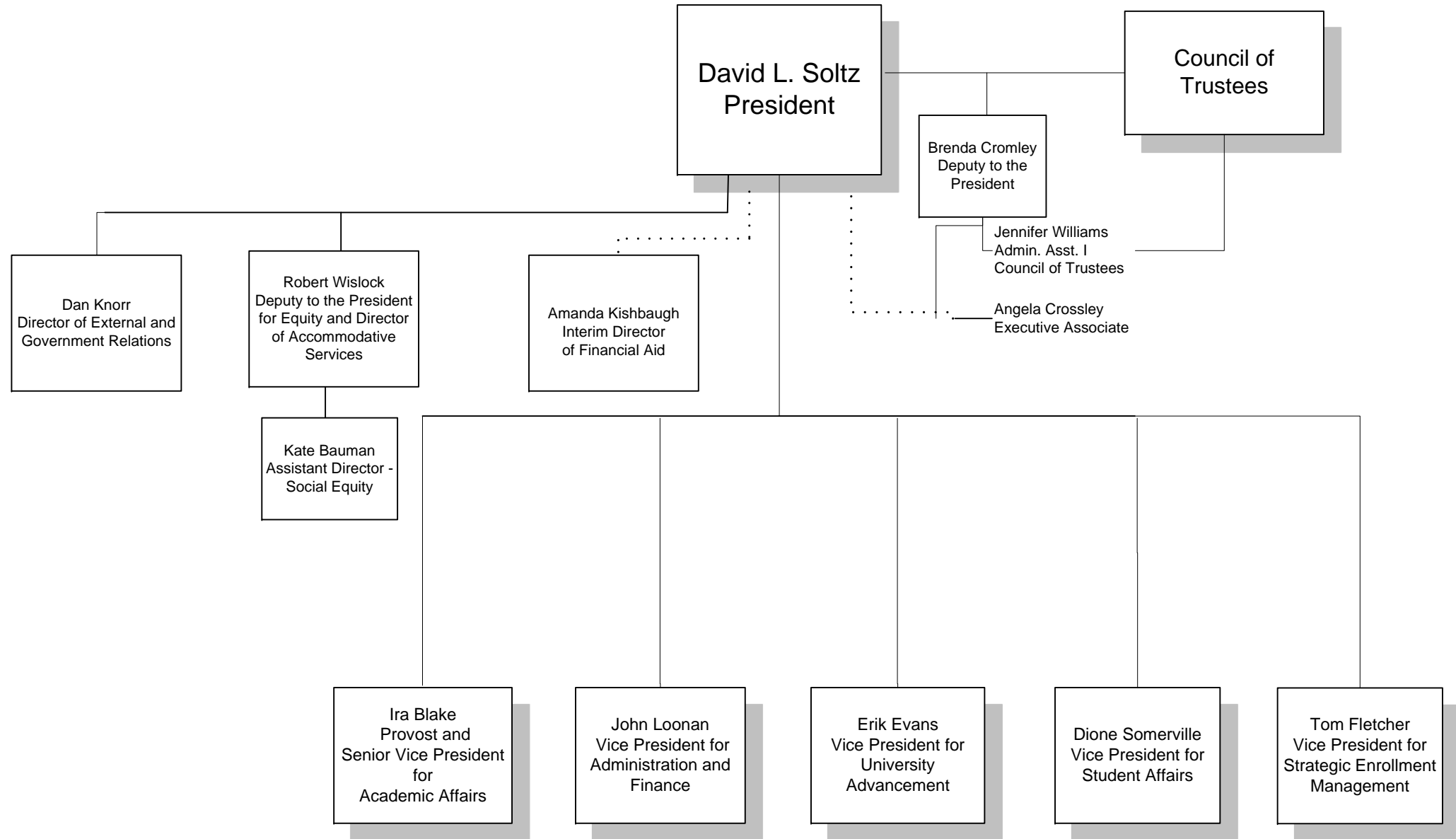
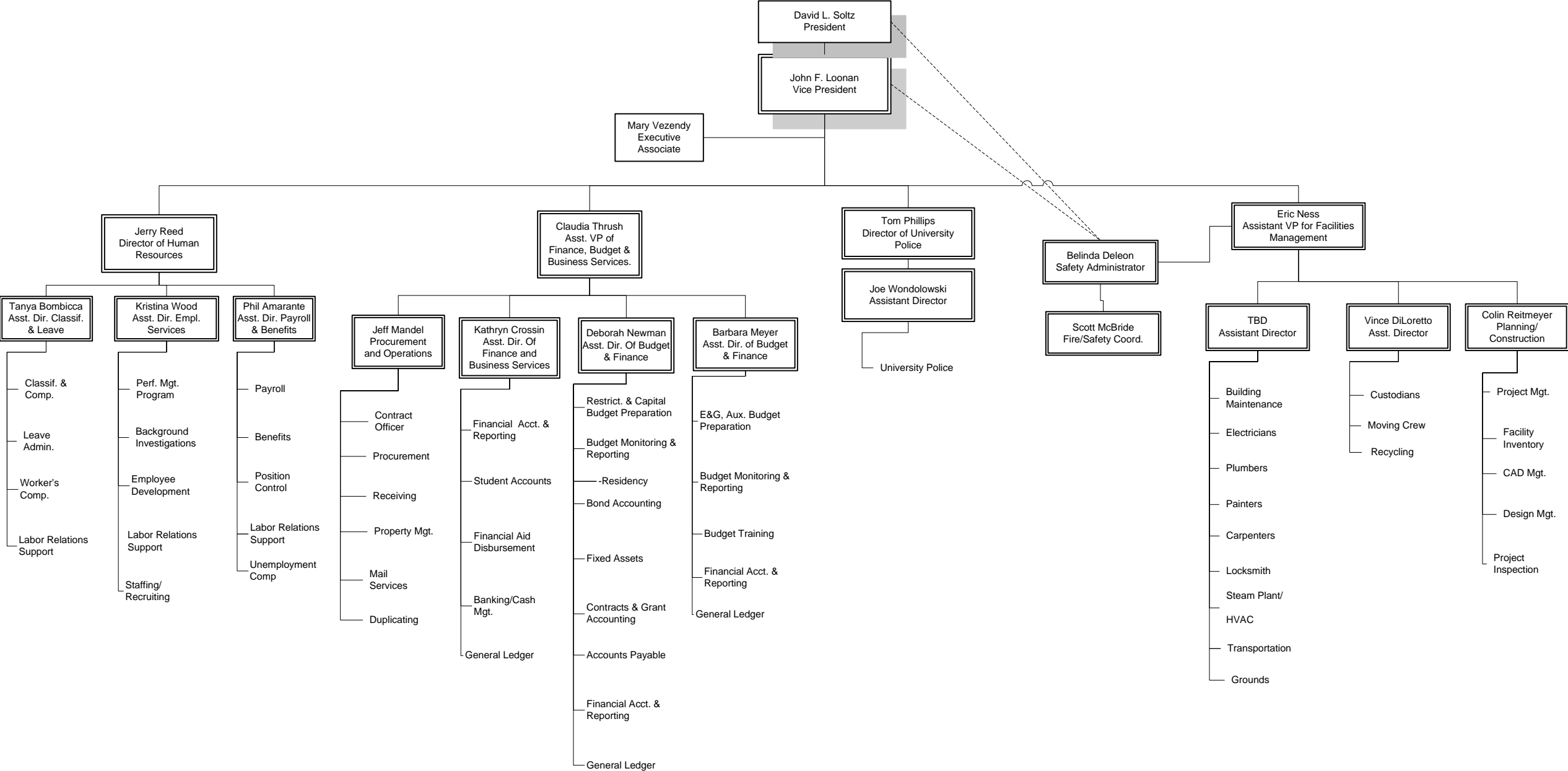


Bloomsburg University
Office of the President
November 14, 2016



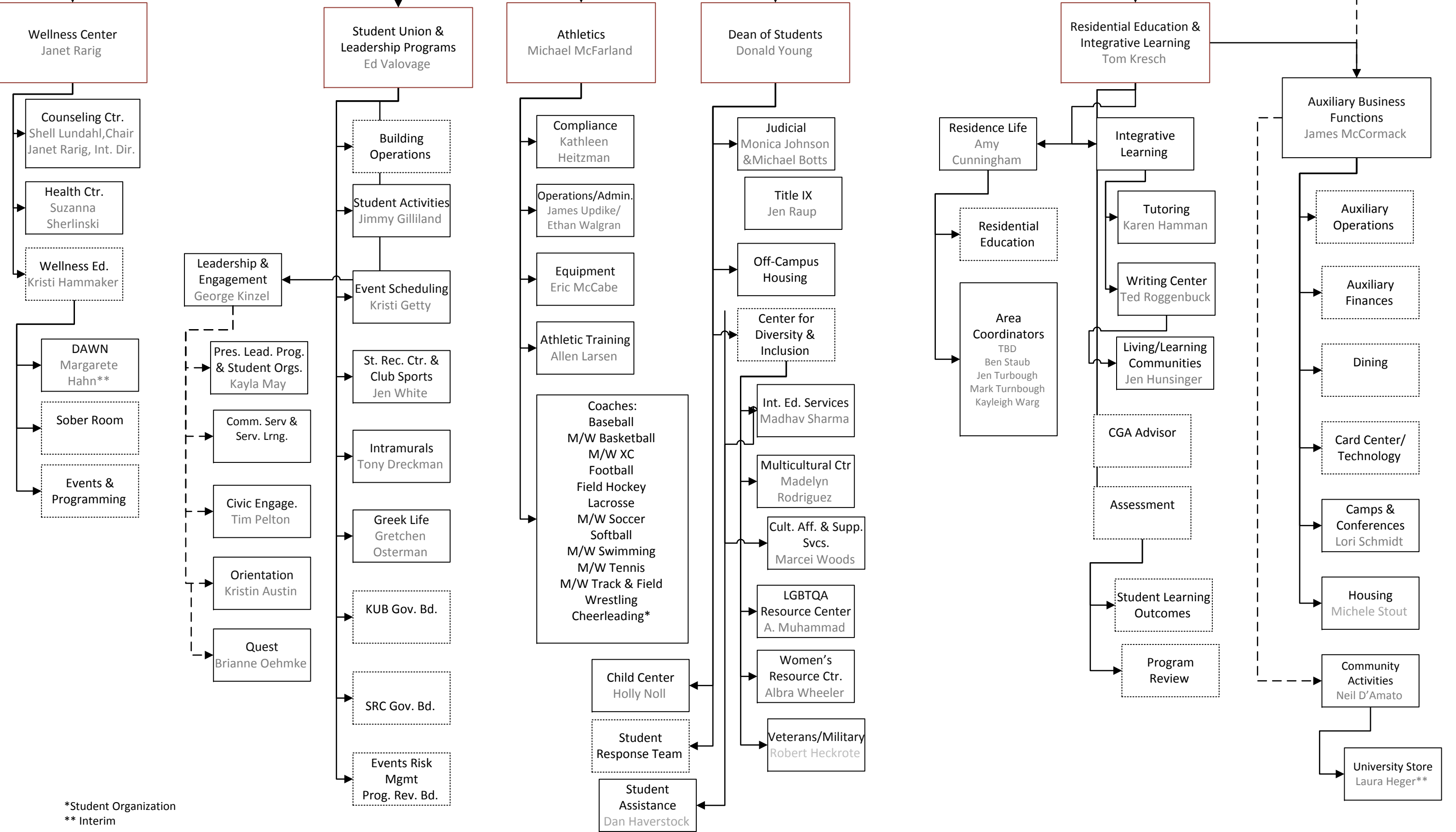
Bloomsburg University
Division of Administration and Finance
March 13, 2017



Student Affairs Organizational and Functional Chart
December 2016

Vice President
Student Affairs
Dione Somerville

Exec. Asst.
Mona
Bartholomew



*Student Organization
** Interim

Academic Affairs - Organization and Functional Chart
February, 2017

President
 (David L. Soltz)

Provost & Senior Vice-President
 for Academic Affairs
 (Ira K. Blake)

Exec. Asst to Provost
 (Amy Osborne)

Assoc VP –
 Technology &
 Library Svcs
 (W. Mohr)

Manager,
 Application Dev.
 (J. Gessner)

Acting Manager
 Network Infrast/Sys.
 (S. Josuweit)

Mgr/ Exec.
 Director, Perf. Arts
 (R. Presswood)

Manager
 Labs/Classrooms
 (D. Celli)

Manager,
 Library/Desktops
 (B. Barnes)

Instruct. Design
 (J. Wolfe)

Director, Library
 Services
 (C. Droll)

LIBRARY
 FACULTY
 (L. Neyer)

Asst VP,
 Planning &
 Assessment
 (S. Jones)

Coord.,
 Research,
 Compliance &
 Assessment
 (J. Harris)

Coordinator,
 Testing Center
 (K. Kollar-
 Valovage)

Statistician
 (N. Stepanik)

Statistician
 (M. Fuhrman)

Statistician
 (A. Wenta)

Compliance
 Coord.,
 J. Heid

Assoc. VP &
 Dean Grad. Stud.
 & Research
 (Acting: S. Awan)

Graduate
 Programs

Undergraduate
 Research Office

IIT (H. Doll)

Interim Director,
 Res &
 Sponsored
 Programs
 (S. Hales)

Dir, Center for Faculty
 Dev/ TALE
 (A. Hidalgo-DeJesus)

Frederick Douglass
 Scholars Program
 (E. Agbaw)

TALE
 Resource
 Center
 F. Douglass
 Teaching
 Scholars

FPD Grants/
 Padagogy
 Grants
 Reassigned
 Time
 Committee

New
 Faculty
 Orientation

Dean, Liberal Arts
 (J. Brown)

Asst to the Dean
 (R. Anderson)

Anthropology
 (C. Quintyn)

Art & Art History
 (V. Hron)

Comm. Studies
 (T. Rumbough)

Economics
 (M. Haririan)

English
 (T. Entzminger)

History
 (J. Davis)

Lang. & Cult.
 (C. Donahue)

Mass Commun.
 (J. Genovese)

Music, Theatre &
 Dance
 (S. Clickard)

Philosophy
 (S. Lowe)

Political Science
 (N. Strine)

Psychology
 (J. Kontos)

Sociology, SW/CJ
 (M. Omori)

Dean, Science &
 Technology
 (R. Aronstam)

Interim Assoc Dean
 (J. Venditti)

Audiology & Speech
 Pathology
 (P. Smith)

Speech, Hearing &
 Language Clinic
 (J. Alberti)

Biology
 (G. Chamuris)

Chemistry
 (B. Wilcox)

Exer. Science
 (T. Martucci)

Instructional Tech.
 (H. Doll)

EGGS
 (M. Shepard)

Math/CompSci & Stat
 (C. Jones)

Nursing
 (S. Hartung)

Physics
 (P. Stine)

Laboratory
 Support Services

Dean, Business
 (J. Krug)

Associate Dean
 (L. Ficht)

Ziegler Institute
 (M. Howe)

Accounting
 (G. Robson)

Innovation,
 Tech., Supply
 Chain Mgmt:
 (M. O'Connor)

Finance
 (J. Ohn)

Management &
 Marketing
 (J. Okpara)

Marketing,
 Prof. Sales:
 (M. Favia)

Laboratory
 Financial
 Services

Dean,
 Education
 (E. Mauch)

Asst to the Dean
 (Vacant)

McDowell Institute
 (Vacant)

Teaching and
 Learning
 (C. Starkey)

Exceptionality
 Programs
 (D. Perner)

Assoc. Dean for
 Academic
 Achievement
 (S. Agbaw)

Diversity &
 Retention/BOG
 Program
 (W. Whitaker)

Access & Success
 (Chigozie Achebe)

ROTC

Academic
 Advisement
 (Vacant)

TRiO Student
 Support Services
 (T. Bloskey)

TRiO Upward Bound
 (J. Kula)

Academic
 Enrichment
 (Interim Chair,
 J. Oast)

Univ. Tutorial Cntr
 (K. Hamman)

Univ. Writing Cntr
 (T. Roggenbuck)

Frederick
 Douglass Institute
 (B. Johnson)

Military &
 Veterans Affairs
 (Robert Heckrot)

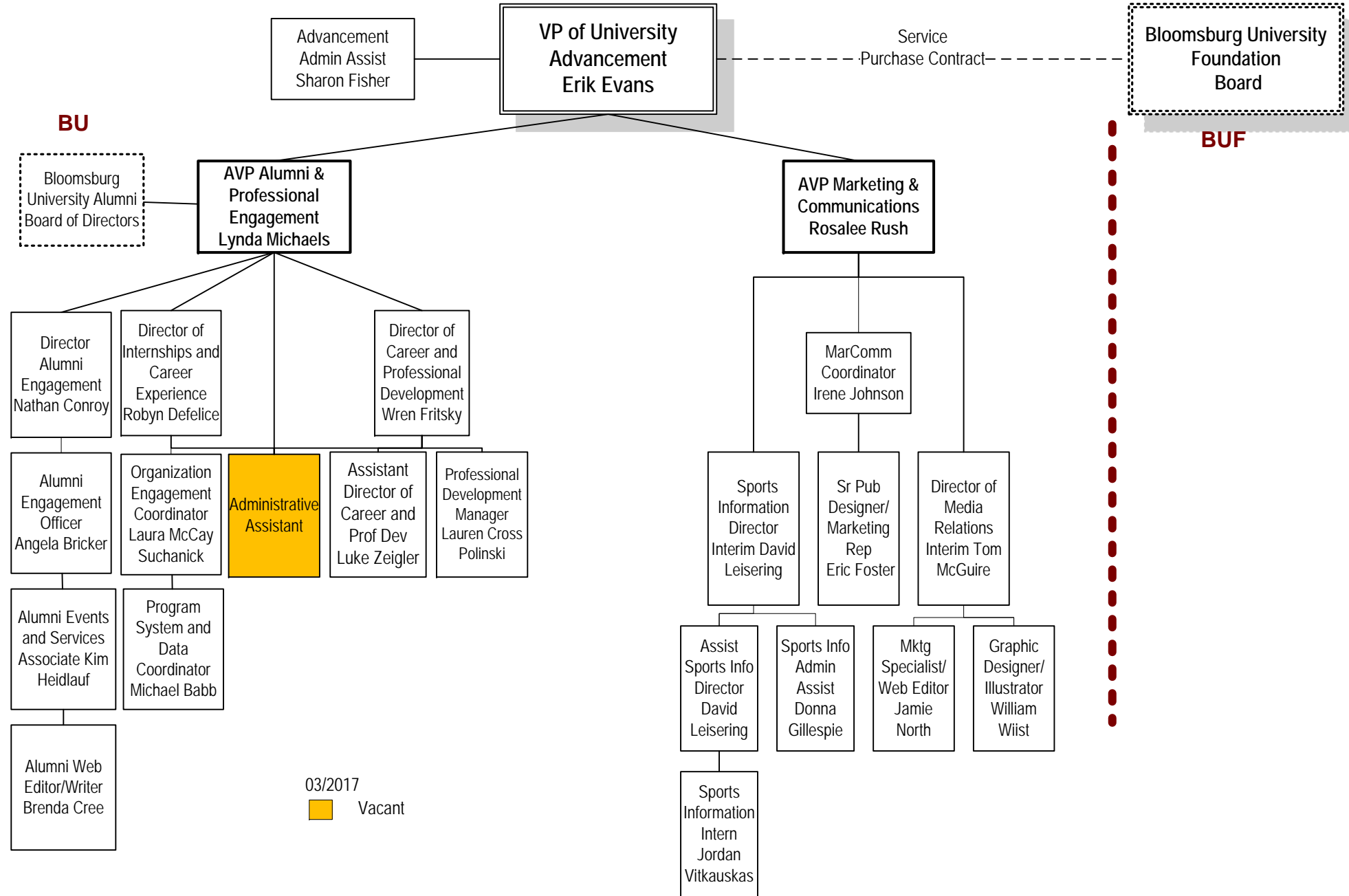
Nontraditional
 Student Services
 Summer
 Freshman Program

Vice Provost and
 Dean, Undergrad.
 Educ.
 (Acting,
 J. Krause)

University Honors
 Program
 Director
 (J. Vandivere)

General Education
 MyCore

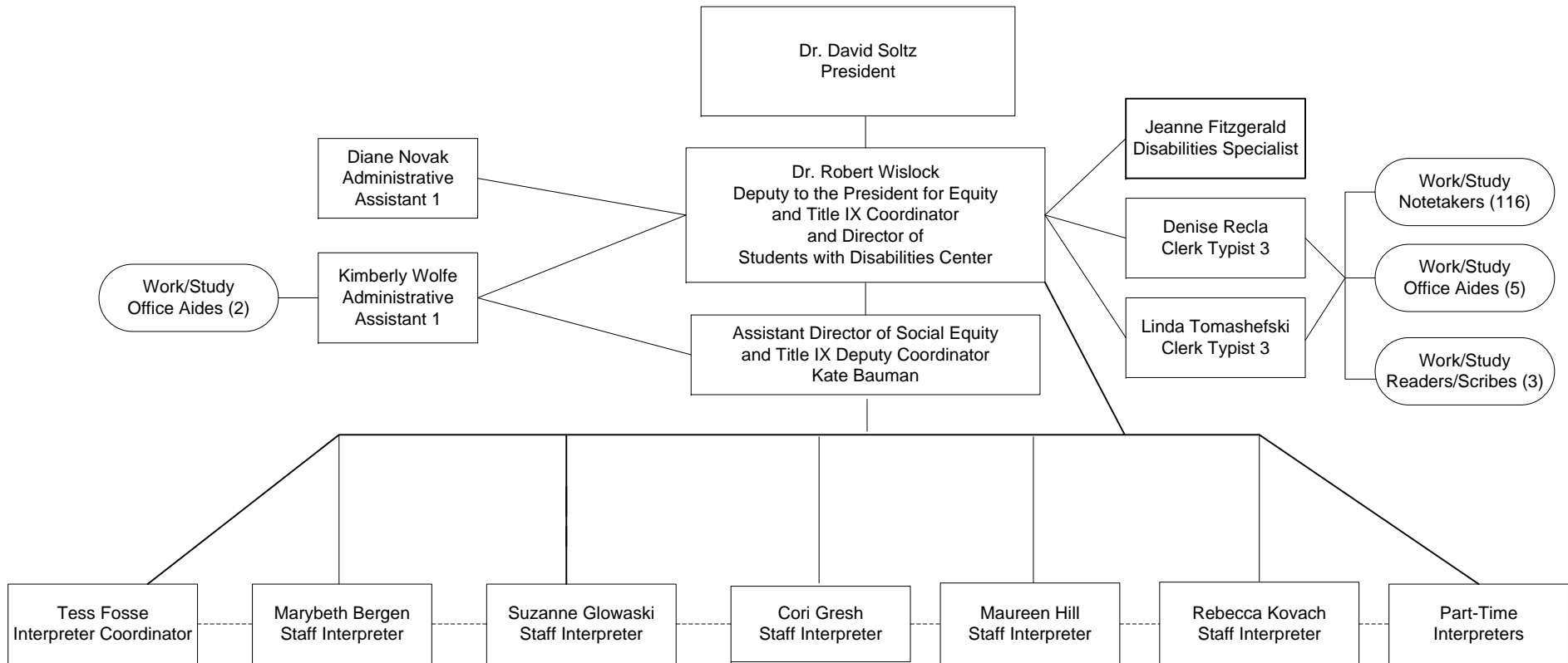
Bloomsburg University Advancement Fully Staffed Organizational Chart



Bloomsburg University of Pennsylvania

Office of Social Equity And Students with Disabilities Center

Organizational Chart
March, 2017



Strategic Enrollment Management

